

# ADVENTURER'S DIGEST

MAY 2022,  
ISSUE 2

*The newsletter  
of the Świdnik Academy of geography*

---

What's inside this issue:

## WORLD MAP TRAVEL

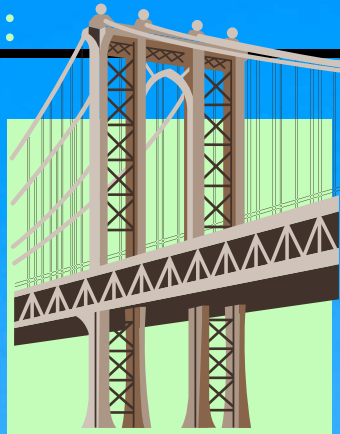
---





In the issue:

**Szymon  
Podolak**



**Krzysztof  
Maszewski**



**Aya  
Mamandi  
Milena  
Kulikowska**



**Natalia  
Stachyra**



**Lena  
Kruk**



*Pomysł stworzenia gazetki szkolnej  
"World Map Travel" powstał  
w ramach programu Erasmus+.*

Celem głównym projektu było podniesienie jakości kształcenia z zakresu:  
pracy z uczniem uzdolnionym, wykorzystania innowacyjnych metod motywowania i wychowania, usprawnienia nauczania dwujęzycznego.

*“Uczenie się innego języka jest nie tylko uczeniem się innych słów na te same rzeczy, ale także uczeniem się innego sposobu myślenia o rzeczach.” – Flora Lewis*

## Dwujęzyczność i nauczanie innowacyjne kluczem do przyszłości



SZKOŁA PODSTAWOWA NR 7  
im. Żołnierzy Armii Krajowej  
w Świdniku



Erasmus+

TIK

Technologie  
informacyjno-  
komunikacyjne



KAPITAŁ LUDZKI  
NARODOWA STRATEGIA SPÓJNOŚCI



2019 - 2022

Projekt realizowany przez nauczycieli SP 7 jest finansowany przez Unię Europejską w ramach programu Erasmus+.

May 2022

Issue: 1000

# NEWS OF THE DAY

---

---

## THE LATEST REPORTS FROM THE COUNTRY AND FROM THE WORLD

---

---

News of the Day. 100 World Free Balloon Competition - participant's report.



Author  
Szymon Podolak



Szymon Podolak, Świdnik

## 100 World Free Balloon Competition.



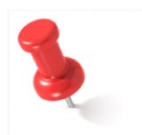
I would like to welcome all lovers of balloon travel. Today I invite you to take part in the XXI Cup named after an American, publisher, millionaire, and extreme sports enthusiast. You will know his name at the end of this fascinating adventure. When you read this article, I would like to take a part in my journey and ask you to fill in all free fields (\_\_\_\_\_).

We start our journey on the starting line in the country that is the world's largest importer of goods, the second (after China) exporter of goods, the third country (after China and India) in terms of population, the fourth country (after Russia, Canada and China) in terms of surface. The starting point is located next to a beautiful beach, the geographical coordinates  $34^{\circ}00'N$ ,  $118^{\circ}29'W$  and the finish line is located at  $40^{\circ}41'N$ ,  $74^{\circ}02'W$ .

**Exercise 1. Using the map, check in which country the competition takes place, and enter the name of that country below (please see page **8** )**



**Exercise 2. Carefully follow my route and put 10 pins on the attached map, marking the places where I have been. The whole thing will show you the exact route of my trip.**



During the journey, each team has two goals: first, to reach the finish line as quickly as possible, and second: to take photos of their journey to show the beauty and diversity of the country in which the competition is taking place. The first Team on the finish line will be graduated with a unique cup and the first place **2 1 3** on the podium of the International Free Balloon Competition. In turn, the most beautiful photo will be awarded the National Geographic World Photo Press and will also be published on the cover of National Geographic.

Let's back to the start line. As you probably already know, we are in \_\_\_\_\_, the coastal town of \_\_\_\_\_ located in the western metropolis of \_\_\_\_\_, in the US state of \_\_\_\_\_. We still have some time to go, so to calm the emotions, I will take you for a short walk on the famous pier going deep into the Ocean \_\_\_\_\_. It is the same place where the famous "Route 66" ends and where you can rest on the bench from the "Forest Gump" movie.

The competition starts at 09:00 am, and preparations are already underway at the finish line to receive players.

The take-off takes place smoothly, ideally every 10 minutes, which is to guarantee the safety of each crew. We start as the 6<sup>th</sup> crew. For this moment,

we have been preparing for a long time. Everyone has equal chances, but everyone has a different plan and idea to get to the finish line.

We started. From now on, each crew is guided only by their map reading skills, forecasting weather, and especially wind control, but also cares about their own safety.

**Exercise 3. If you know where the start and finish points are, enter the time (local time) at the finish line when my balloon took off from the ground.**

Few minutes later, we see the unique Beverly Hills district with the famous street "City of Angels" - Rodeo Drive, known for its exclusive shops and a



Photo 2:wikipedia.com

snobbish atmosphere. In the distance you can see the Dolby Theater, the site of the

annual Oscars, where the most famous cinema personalities and Grauman's Chinese Theater will meet on the red carpet. Here you can find footprints and handprints of cinema celebrities and Donald Duck. In the distance, the Roosevelt Hotel, the site where the American Film Academy Awards were first presented, flashes in the distance. We head northwest and after next minutes we fly over the Griffith

Observatory where you can see the famous whitening letters "Hollywood" standing on the slope of the nearby hill and the enormity of the agglomeration \_\_\_\_\_. You can see Sequoia National Park and Kings Canyon-adjointing mountain areas, full of majestic granite peaks, deep gorges, lakes, rivers and forests. There are natural redwoods, the tallest trees on Earth, some of which are over 3,000 years old. You can see the Forest \_\_\_\_\_ - a fragment of the park with 5 of the 10 largest trees in the world, including the largest sequoia called \_\_\_\_\_.

**Exercise 4: Enter the name of the US state in which we are currently located.**



Photo 1 feel4nature.pl







## Pin 2

We are about 400 miles ahead. We are now moving northwest, in the direction of \_\_\_\_\_ We are flying along 17 Mile Drive, a highway along the majestic wharf, amid golf courses and impressive mansions - deliberately lowering the flight as we want to take some photos at Birds Rock, known for its giant pelicans and herds of sea lions. We have more photos for the competition. After a few hours, we are over a large city. Our GPS shows the geographic point  $37^{\circ}46'N, 122^{\circ}25'W$ . We can see here, among others, the famous Golden Gate Bridge, Alamo Square. After a while, we admire the famous Alcatraz prison and the Golden Gate Bridge, the most recognizable promises \_\_\_\_\_.



## Pin 3

Next place on which we put our third pin is located about 170 miles from \_\_\_\_\_ - a valley in the Sierra Nevada Mountain range. Passing Lake Tenaya and the Tioga Pass (3031 m above sea level). Our stopovers is located on  $37^{\circ}45'N, 119^{\circ}35'W$ . Here we can see a valley carved in a fairy tale by the glacier. We admire interesting rock formations and the highest waterfall in America, which measures as much as \_\_\_\_\_ m height. These views will surely remain in our memory for a long time. Mark on the map where are we now? Did you manage to find this point on the map? Yes. This is the largest US National Park - Yosemite - one of the natural wonders inscribed on the UNESCO National HeritageList.



Photo 3myyosemitepark.com



## Pin 4

Our next point to which we are heading (about 180 miles away from the previous one) is the most amazing place in America - located over 80 m below sea level (geographical coordinates  $36^{\circ}30'N$ ,  $117^{\circ}04'W$ ). We see the Mesquite dunes, the fabulous world of sand rocks in the Artist's Palette area which, due to the presence of many minerals, take on fanciful colors, and a dry salt-lake famous for "moving stones". This is a special place - the National Park.



## Pin 5

We are in a hurry to reach \_\_\_\_\_ before dark. We must cover 100 miles. I look forward to see the American canals of Venice and the streets of Rome with the Trevi Fountain, the spectacular volcanic eruption at The Mirage Hotel and the breathtaking dancing fountain at the Mirage Hotel. The night view of \_\_\_\_\_ ( $36^{\circ}10'N$ ,  $115^{\circ}08'W$ ) full of shiny casinos and illuminated streets is unforgettable.

It's time to move on. Today we have great weather and great visibility, which allows us to see Alaska and the areas of Canada on our left, Mexico on the right, and behind us in the distance you can see the island of Honolulu.

**Exercise 5: What direction are we going?**



## Pin 6

After another 80 miles we are over the State of ARIZONA by \_\_\_\_\_. We see groups of people. Some people are walking on the famous glass platform over the rim of \_\_\_\_\_, others choose a helicopter flight over \_\_\_\_\_, and still others a cruise on the river \_\_\_\_\_. And we can admire this miracle of nature in its entirety. Remember to put pins on the attached map, documenting our journey ( $36^{\circ}05'N$ ,  $112^{\circ}06'W$ ).



## Pin 7

We go north-east. There is a very long trip ahead - over 1,200 miles. We have time to admire the beauty and diversity of this wonderful country. We pass the state of UTAH and WYOMING, reaching the state of \_\_\_\_\_. We manage to catch good, warm winds that blow at latitudes  $30^{\circ}$  -  $60^{\circ}N$ . Do you know what they are called? Thanks to them, our speed increases significantly and we arrive there earlier than we planned.

The latitude and longitude of the place where we will descend is  $43^{\circ}52'N$ ,  $103^{\circ}27'W$ . It is a mountain in which the faces of former US presidents: George Washington, Thomas Jefferson, Theodore Roosevelt and Abraham Lincoln are carved into the rock.



**Exercise 6. How do we call a warm, steady, moderate wind (3-4 Beaufort) in the tropics towards the equator between 35°N and 35°S latitude?**

**Exercise 7: What is the name of the famous mountain with the carved faces of 4 US presidents ?**



### Pin 8

We start our journey again. We have 500 miles to the next point. It would take us about 10 days on foot. But our balloon carries us much faster. We are now in the state of \_\_\_\_\_, whose capital is the city of \_\_\_\_\_ (41°45'N, 87°33'W). The city has 2,695,598 inhabitants and large part of it is a Polish diaspora, which settled here as early as 1620. The city is located on the shores of ..... Lake, the third largest in the complex of the five Great Lakes of North America and the only one that lies entirely within the territory of the USA.



Photo 4 lonelyplanet.com



### Pin 9

Our next destination is located 600 miles on east of \_\_\_\_\_, on the East Coast of the United States. The landing point is quite brave: 38°53'N, 77°02'W. This is the most important place for all Americans. This building was built on November 1, 1800. Its name was given by President Roosevelt on September 14, 1901 and is closely related to the color of the facade of the building.

We can take a commemorative photo with the host of this house. Joe Biden is extremely nice person and we even received commemorative medals of honor for our balloon competition.

**Exercise 8: What is the name of the building in Washington DC that houses the US President?**



Photo 5wikipedia.com



### Pin 10

We are approaching the finish line of our competition. We have less than 250 miles to the finish point. This time the wind carries us to the north-east. The last point on the map of our trip is

ahead of us. This is the city with the largest number of inhabitants in the entire United States, and at the same time the center of one of the most populous agglomerations in the world. The city, which is the seat of the United Nations, is an important center of international affairs and is widely regarded as the cultural capital of the world. Here we have the famous Central Park and the business \_\_\_\_\_ District. We're just flying over the 5<sup>th</sup> Avenue. We have here expensive stores, countless salons of famous fashion designers and restaurants branded with the names of show business stars. We pass Times Square, Wall Street, and the recent crash site of the World Trade Center. We are lowering our flight because we can already see the finish point. Our finish point has the geographical coordinates of **40°41'N, 74°02'W** and is located on the island of \_\_\_\_\_ at the mouth of the \_\_\_\_\_ river to the \_\_\_\_\_ Ocean, near the copper statue that was built in France and in 1884 was donated to the American ambassador in Paris. It was transported in parts on ship and put together on the spot. It has been standing in its present place since October 28, 1886.



Photo 6 bryla.pl

**Exercise 9: What is the name of the building on Liberty Island showing a figure holding a torch in his right hand and a plaque on the left with the date of the United States' independence?**

Used sources;

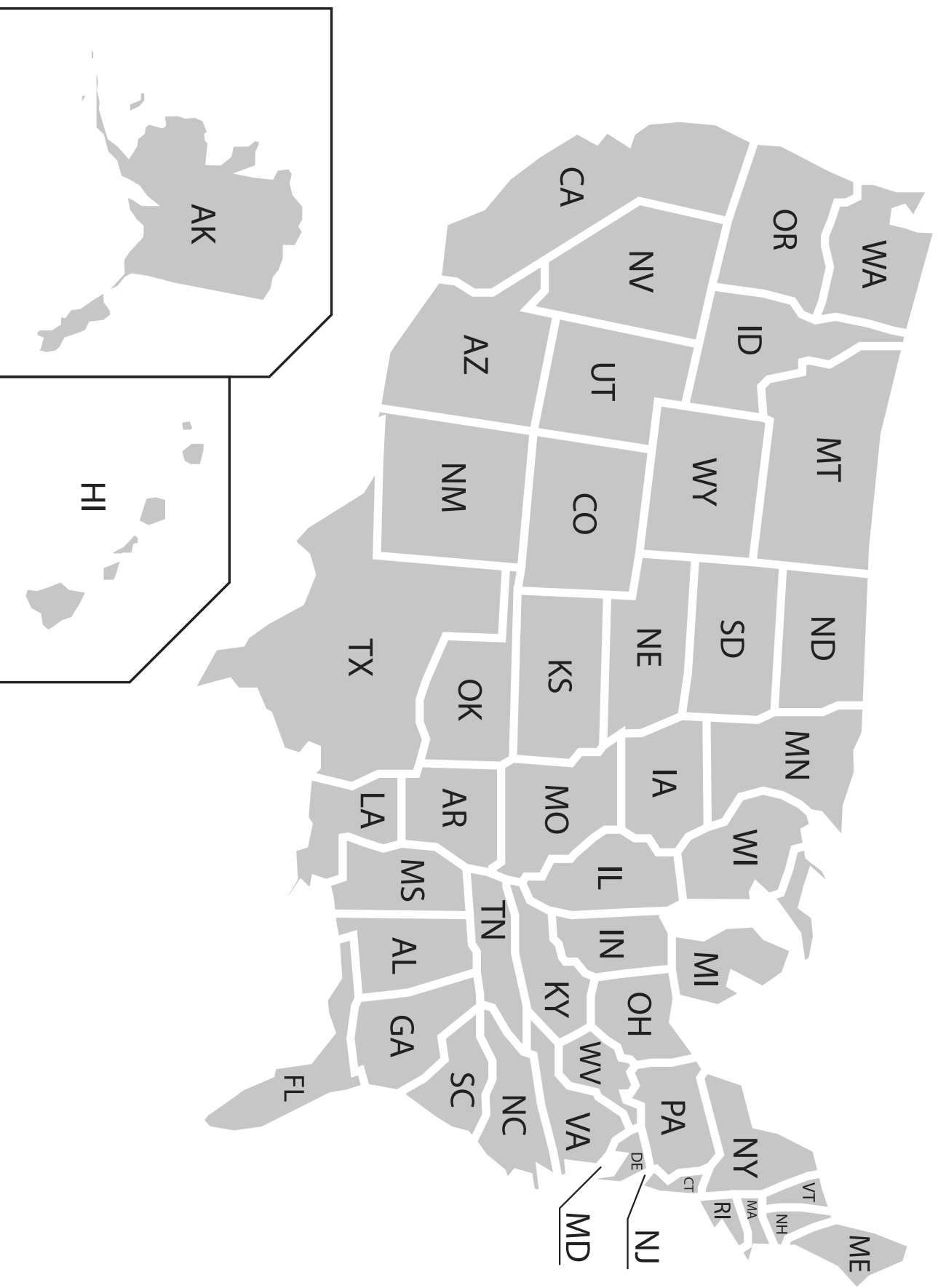
- RAINBOW.PL
- WIKIPEDIA.COM
- FEEL4NATURE.PL
- INTERAMERYKA.COM
- SPRACHCAFFE.COM



May 2022

## NEWS OF THE DAY

**Exercise 1:** Below is a contour map of the United States of America. Test yourself and put 10 pins in the places I've been .



*Exercise 10: Using the atlas, calculate the actual distance between the starting and the finish point*

### *Crossword puzzle questions (please complete in polish language)*

1. What is the name of a city that is a coastal city of the United States in the western metropolis of Los Angeles in the US state of California?
2. In which city Alcatraz prison is located?
3. What is the name of the largest National Park in the USA, which is one of the wonders of nature inscribed on the UNESCO National Heritage List?
4. What is the name of the deepest depression in North America, surrounded by red sandstones?
5. What is the name of the city famous for the American canals of Venice and the streets of Rome with the Trevi Fountain?
6. What is the name of the place more than 80 m below sea level in the USA?
7. What is the name of the mountain in which the faces of former US presidents are carved?
8. The city, which is largely inhabited by Poles, has a name.
9. What is the capital of the United States?
10. Which city is the seat of the United Nations?



travel  
**america**  
 the country of dreams

1  
f

2  
a

3  
b

4  
k

5  
a

6  
i

7  
k

8  
e

9  
j

10  
d

a b c d e f

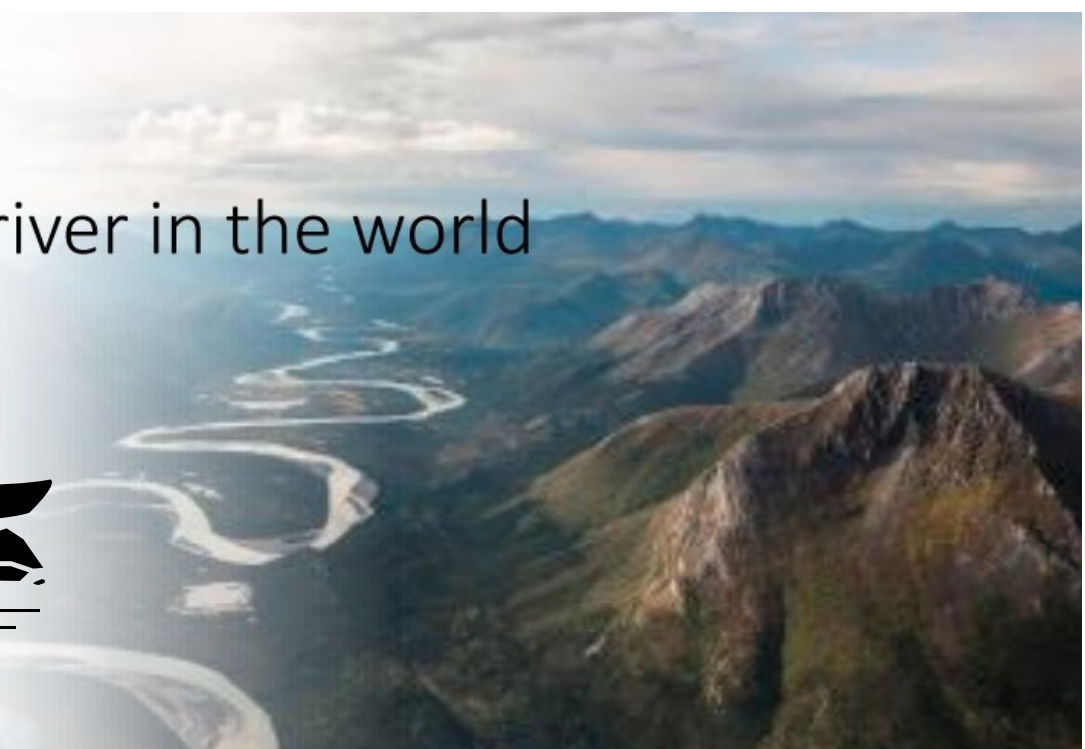
B h i j k l m

CUP

# The biggest river in the world



Journey on the Amazon



## Information about the Amazon

The area of the land with its tributaries is 7 200 000 km<sup>2</sup>

• For comparison, the area of Poland is 312 679 km<sup>2</sup>

It has the largest water flow rate on Earth.

Length:

6400 km or according to new measurements 7040 km (then it's the longest river in the world).

**Author:**  
**Krzysztof Maszewski,**  
**Świdnik**

Previous  
version of the  
length

6400 km



Length  
according to  
new research

7040 km



## Stage I - at the source

*Before we start our cruise on the Amazon, we board the helicopter to find the beginning of the most powerful river in the world.*

Where are we going?

### TASK 1

Solve a simple rebus to give the pilot the name of South America's largest mountain range:

& + es





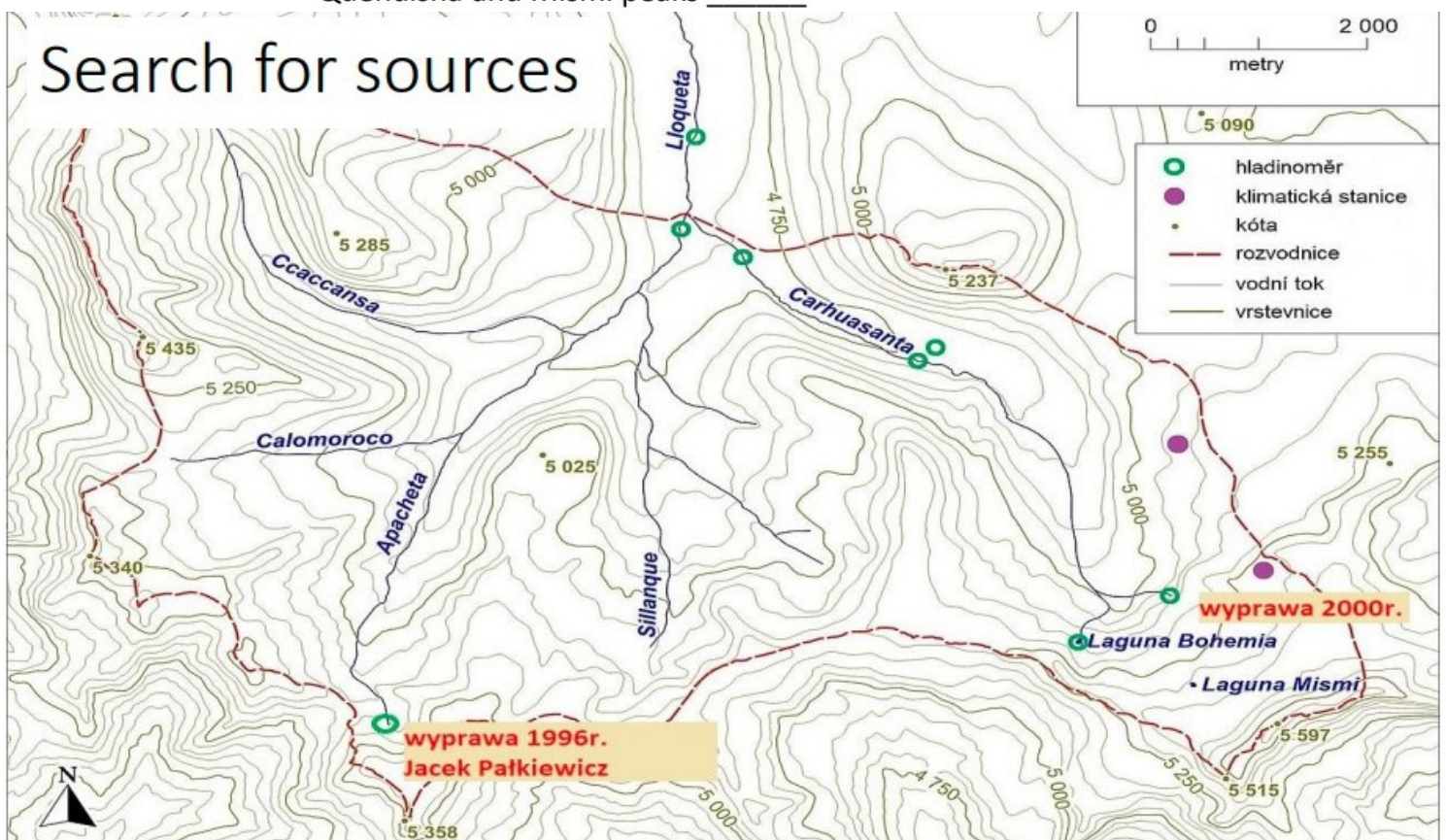


We're flying to Peru in the Andes. The landscape looks like a desert from a distance, but when we lower our flight we see snow on the tops of the mountains and valleys through which small streams flow down.

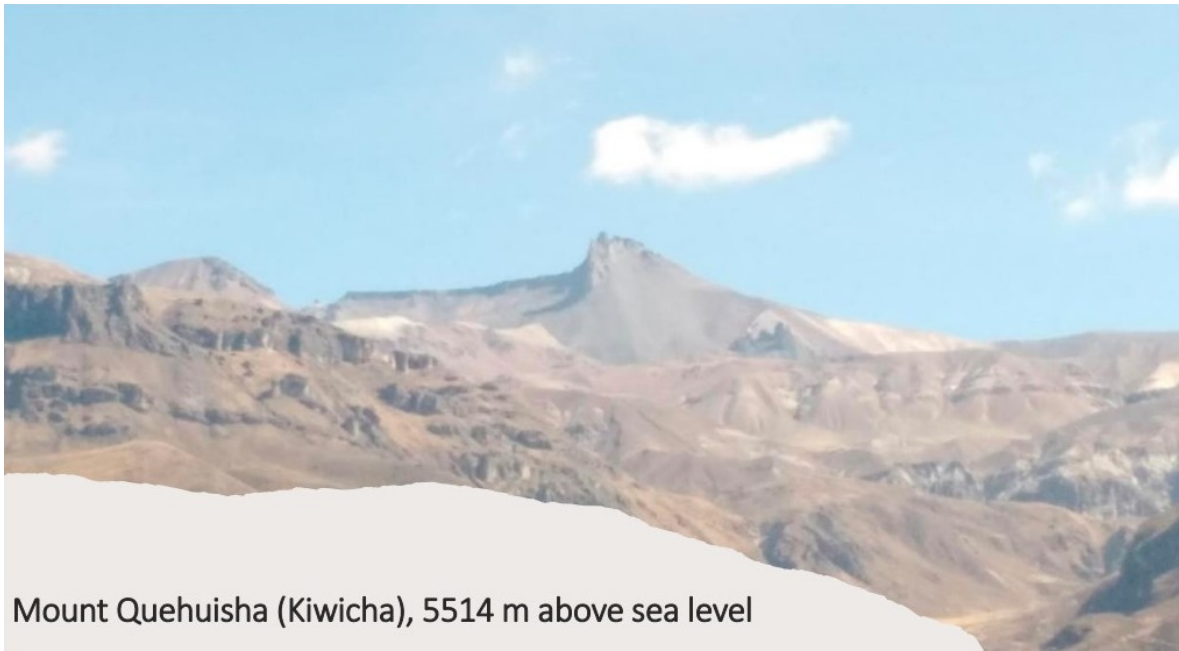
Is there one source?

- In 1996, Jacek Pańkiewicz's expedition recognized the Apacheta stream flowing at an altitude of 5,150 m above sea level as the source of the Amazon.
- Another scientific expedition in 2000 found the neighboring Carhuasanta stream (next to Mount Misimi 5597m above sea level) as its source.
- It is possible that it is impossible to say who is right - the amount of water in the streams changes every year.
- To land, calculate and enter the relative altitude between the Quehuisha peak and the source of Apacheta \_\_\_\_\_ and between the Quehuisha and Mismi peaks \_\_\_\_\_

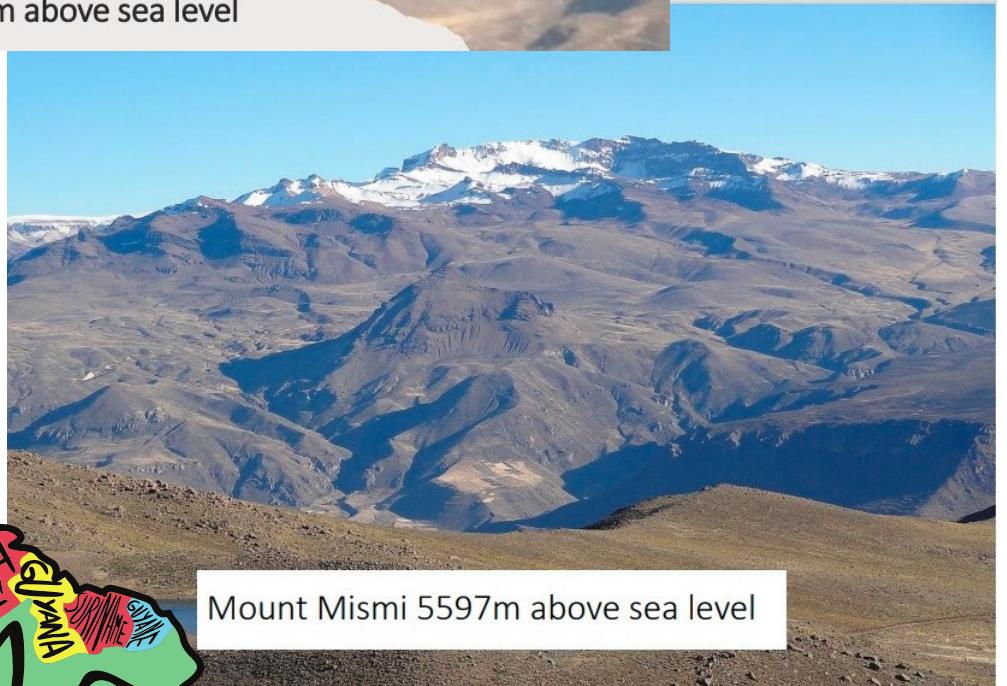
## TASK 2



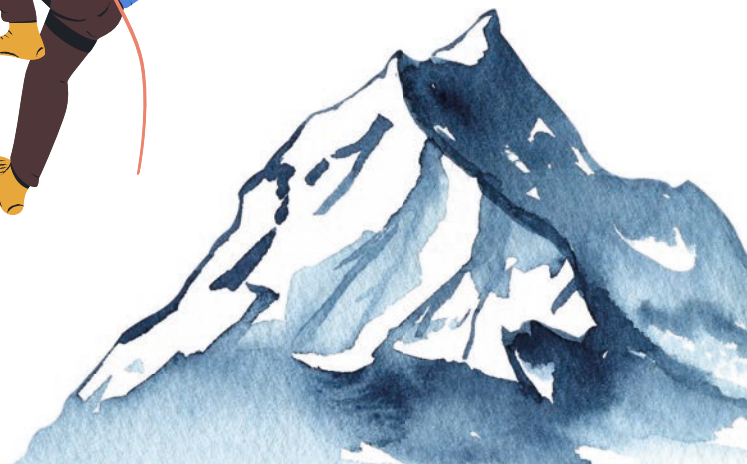




Mount Quehuisha (Kiwicha), 5514 m above sea level



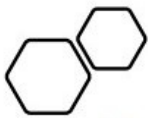
Mount Mismi 5597m above sea level







# Andes in Peru



## TASK 3

### Peru

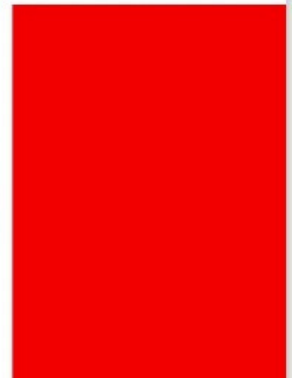
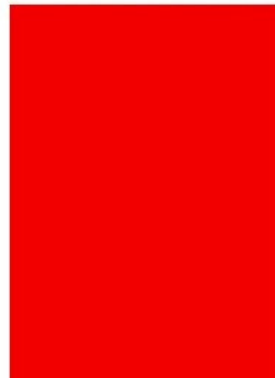
What 3 zones can Peru be divided into?

Delete the wrong ones:

Pacific coast/Atlantic coast

Apennine Mountains/Andes Mountains

Amazon Jungle/Desert Gobi



## Andes

- In this part of the Andes, there is a dry mountain, subtropical climate.
- It is surprising that the water that flows to the southwestern slopes of the mountains has only about 200 km to travel to the Pacific and that flowing to the northeast will flow over 7,000 km into the Atlantic.
- The Amazon in this part flows between the mountains, other streams connect with it, and it gets bigger with each kilometer.







## Stage II - the middle course of the river

In the place where the tributaries of Marañon and Ucayala (the former beginning of the Amazon River) meet, we start a cruise.

After about 100 km of cruise, we pass the city of Iquitos ( $3^{\circ}45'S, 73^{\circ}14'W$ ), which has 400 thousand residents and can only be reached by boat or plane. The river at this stage is up to 20 km wide.

**TASK 4** While sailing, we cross the border of countries and enter.....

## What country are we in?

- It is the largest country in South America.
- The Equator and the Tropic of Capricorn pass through this country.
- There are 3 lands in it - the Gujan Upland, the Brazilian Upland, the Amazon Lowland.
- They like to play football there. 😊



## Wet equatorial forest

- The Amazon lowland is located in the equatorial climate zone.
- There are very good conditions for plant development - high temperature and heavy rainfall, there are no seasons.

## TASK 5

Enter the name of the rainfall that occurs daily in the equatorial forest.

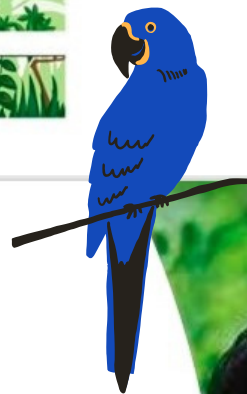




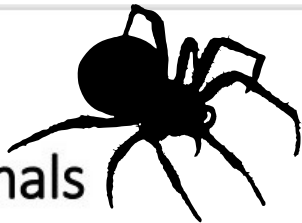
# The layers of the equatorial forest

Assign the numbers to the layers of the equatorial forest:

- The layer of trees 30-40m, creating a compact layer that transmits little light .....
- A layer of single trees with a height of 50 - 70m .....
- A layer of shrubs and undergrowth .....
- Layer of low trees .....



## Animals



There are many unique animals in the Amazon and jungle:

- freshwater dolphins
- piranhas
- caimans
- anacondas
- leopards
- monkeys
- exotic birds
- butterflies and insects





## TASK 7

# Cross out the Amazon animals

R Y L K S E J J H O W L E R F M J T E K Y L D E B D  
A J A N A C O N D A S S I X M A K H C A P U C H I N  
R C C J S Q K K Z D K E S M N M E U F V Z T H Q D I  
M Y W O P C V A V G U H W T M B U T T E R F L I E S  
A D G R I H S K E S R V - O T Q N B L U I I N I P C  
D T Q B D A L V H E M E N A C F C L E O P A R D S M  
I V K I E M O G J A A K C L C A P Y B A R A N T I U  
L O I L R E T I S T E A O C E L O T S W G E Z F G C  
L O I Y M L H V E Y I A Y W F H D B K N J P B U C M  
O X U D O E N R S M E L X L E M B H P I R A N H A Q  
A W Y P N O F O A H U M M I N G - B I R D H C Q T C  
N B Y A K N U N Z F I C O A U Q X O K Q V N T A I O  
X Q V R E B S J M N F J Q Y F Y T O U C A N J E V H  
A U Z R Y W S F R E S H W A T E R D O L P H I N S Q  
V N Y O W Z T A P I R K F Z P T K L J I G C X I J A  
M Z A T U B P C W G V A F E I I F I F O J X K F X D  
I N S E C T S V Z X N W W W B D F S E G P U M A K D  
J A G U A R X N B M U M A X T B O J Y J A A T E R K



## Amazonian Indian tribes

- the inhabitants of the jungle are the Amazon Indians
- they are engaged in hunting, fruit picking and the cultivation of cassava
- sell the items they manufacture
- they build houses on stilts to prevent flooding and the ingress of poisonous animals
- some tribes still live outside of civilization today





# Manaus - a big city next to the jungle

RIO NEGRO

Why don't these rivers mix?

- We reach the largest city on the Amazon. It is inhabited by over 2 million inhabitants.
- It is situated at the junction of the Amazon River with the Rio Negro River.
- In the years 1890 - 1920, rubber was shipped from this port for the production of car tires.
- Manaus is visited by many tourists because of its climate and proximity to the Amazon rainforest.

SOLIMOES

Brazilian name of the upper part of the Amazon, describing the section of this river from the Peruvian border to the mouth of the Rio Negro.

## TASK 8

What time of the solar time is in Świdnik ( $51^{\circ}13'N$ ,  $22^{\circ}42'E$ ) when in Manaus ( $3^{\circ}07'S$ ,  $60^{\circ}01'W$ ) it is 10.00 solar time?

The Amazon is the communication path for the cities of Manaus, Iquitos, and many other smaller jungle settlements.

## TASK 9

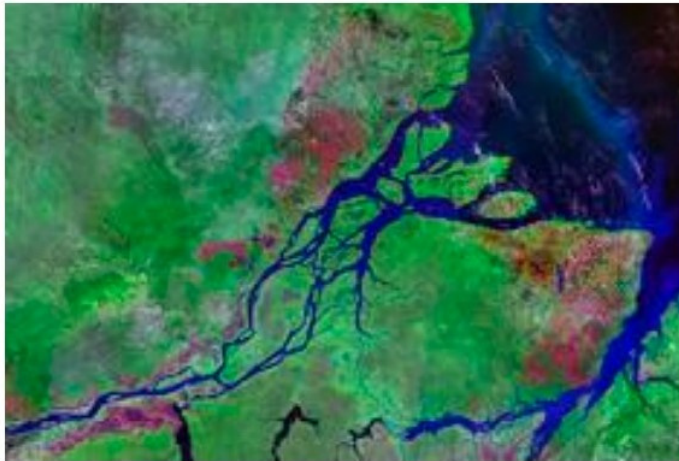
Calculate the real distance between Manaus and Iquitos if on the map at a scale of 1:7,000,000 they are separated by 20 cm and 3 mm.



Manaus



## Stage III - the outlet to the Atlantic Ocean



The entrance to the ocean begins as early as 300 km from the coast. There is the largest river island in the world - Marajo with an area of 48,000 km<sup>2</sup> (e.g. Switzerland has 41,000 km<sup>2</sup>). The water flow of 300,000 m<sup>3</sup>/s means that as much as 400 km deep into the ocean, the water remains fresh.

## A new discovery

In 2016, scientists discovered a **coral reef** near the mouth of the Amazon River.



The trip is over - thank you for watching!

Made by:

Krzysztof Maszewski 8b

## Sources

- photos - pixabay.com
- wikipedia.org
- Google Maps
- nationalgeographic.com
- <https://www.palkiewicz.com/>





Author: Aya Mamandi

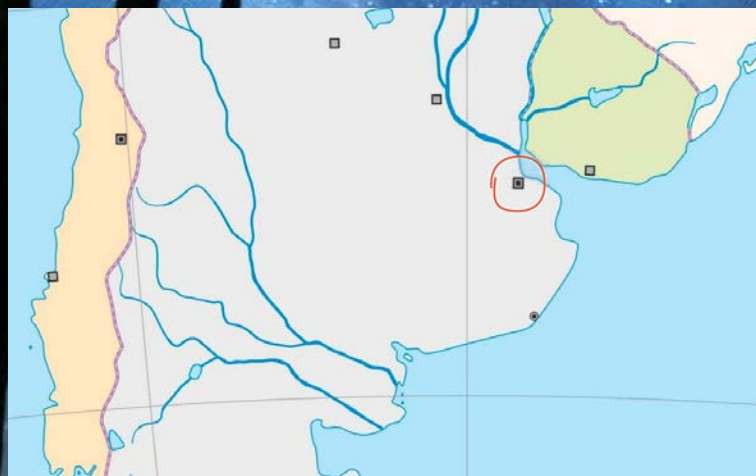


I'd like to welcome you all on my journey to South America. It's a beautiful part of the globe and I've decided to prepare some fun riddles for you to solve. Let's begin...

My journey consisted of three parts, three different countries of South America. We shall begin with the first one.

My form of transport was a ship, so my whole journey was a wonderful cruise. It took me a week to get to the first place. Even though it was quite exhausting, because the time difference is four hours. It was undoubtedly worth it. I realized that when I noticed the astonishing Woman's Bridge, Puerto de la mujer, located only a couple miles from the seaport. I smiled and breathed the moist air and looked at the sky. There were a lot of clouds, surprisingly. That's not quite what I had expected. I went on and went to the city centre on foot, whilst admiring Rio de la Plata.

The city is inhabited by around 3 million people, and since it's one of the biggest countries in South America, it attracts loads of tourists as well. As I went along the widest street in the world - Avenida 9 Julio, I was amazed by how loud and lively this city is.



**Your first task: recognize the city based on the given description. here's a small map which might help you with this.**



After spending one day in the city, which hopefully you guessed, I had to go back to the seaport to get on the ship and head to my next destination. The cruise lasted 5 hours this time. This city is known for being one of the safest capital cities in all of Latin America, as well as South America's highest ranking city for quality of living. Here are some more interesting facts about it:

- it was found in 1724
- it's regarded as the most gay-friendly metropolis in the world
- its population is around 2 million
- it's a capital city of a country, which is named "river of painted birds"

During my stay in this city, I was amazed by the rich cultural life it has. What's also worth seeing, are its monuments and beautiful places, such as:



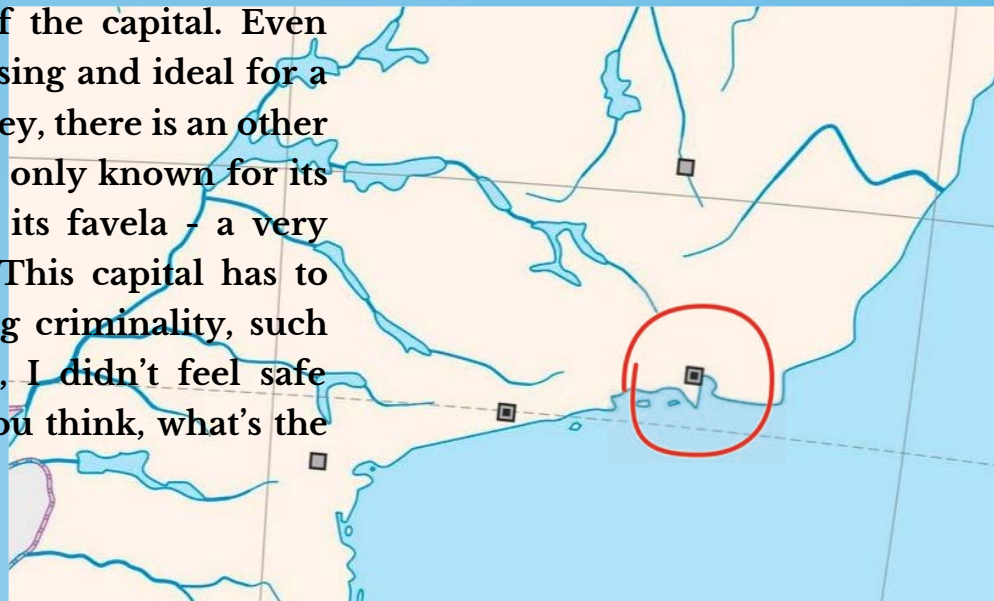


Your second task is to recognize those places, as well as the capital I'm talking about. Here's a small map once again:



<https://pl.wikipedia.org/wiki>

I hope you managed to complete your last task. After spending some wonderful time there, I had to go back to the puerto of that city and continue my journey. The cruise lasted 4 days this time. It was quite enjoyable. After this time, I got to the lively city, known as the River of January in Portuguese. I was very much excited to spend some time on the beaches of Copacabana and Ipanema, as well as meeting the friendly people of the capital. Even though it might seem very pleasing and ideal for a place to stop at during my journey, there is an other side of the story. The city is not only known for its colorful carnivals, but also for its favela - a very dangerous district of the city. This capital has to face serious problems regarding criminality, such as drug dealing. To be honest, I didn't feel safe being aware of that. What do you think, what's the name of that city?



What I was most looking forward to seeing, is the famous statue, which you can recognize on the next picture.







**Your third task:**  
**I've got a question for you**  
**- how tall is that statue,**  
**and what's the name of the**  
**mountain it was built on?**

I bet many of you associate South America with rainforests. It won't come as a surprise that I decided to visit them. Just 10 minutes from Rio city centre is Tijuca National Park, the world's largest urban forest. Even though Tijuca has more biodiversity than the Amazon, it nearly didn't exist. By the mid 1800's, 70% of the forest had been cleared for coffee growing, fuel and livestock. Right now, it's constantly evolving.

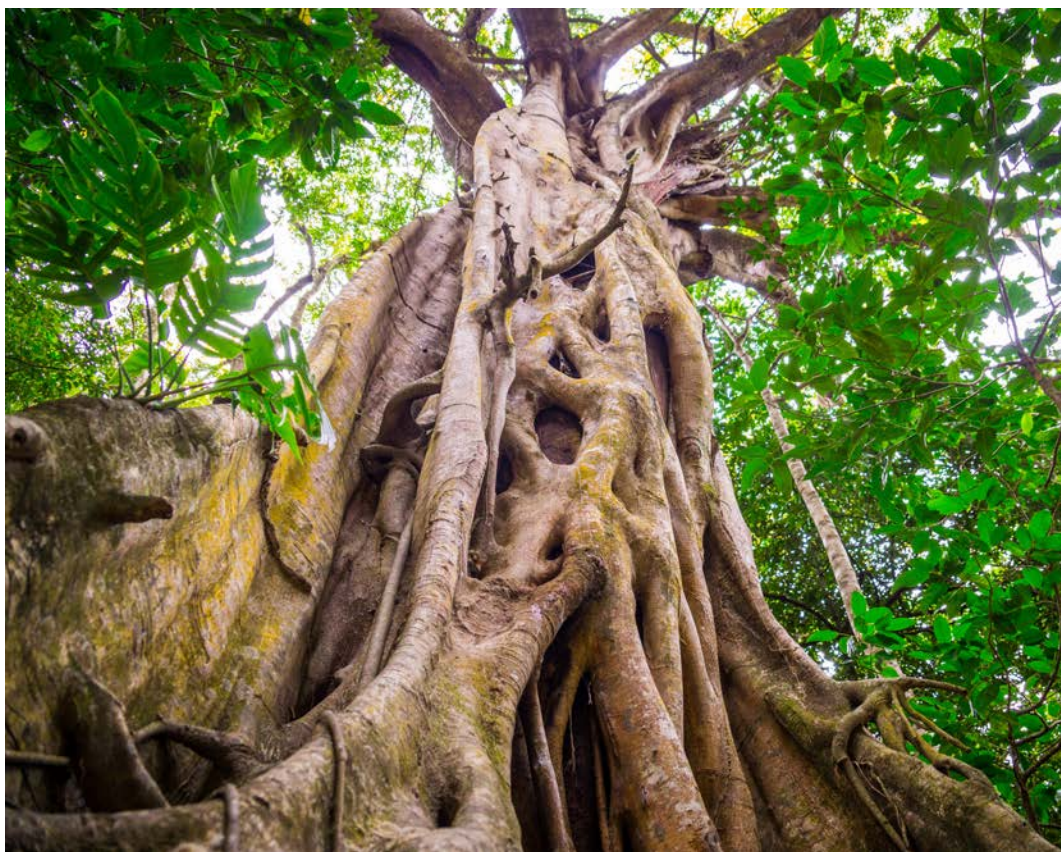
The experience of being there is impossible to compare to anything else - I felt freedom and the power of nature.



Those are its current boundaries.



Your fourth task: What is the biggest rainforest in South America?



Sources: [en.wikipedia.org/wiki/Montevideo](https://en.wikipedia.org/wiki/Montevideo)  
<https://www.britannica.com/place/Montevideo>  
<https://www.nationalgeographic.com/travel/destination/buenos-aires>  
[https://en.wikipedia.org/wiki/Christ\\_the\\_Redemer\\_\(statue\)](https://en.wikipedia.org/wiki/Christ_the_Redemer_(statue))  
[https://en.m.wikipedia.org/wiki/Tijuca\\_National\\_Park](https://en.m.wikipedia.org/wiki/Tijuca_National_Park)

Made by:  
Aya Mamandi



Author: Milena Kulikowska

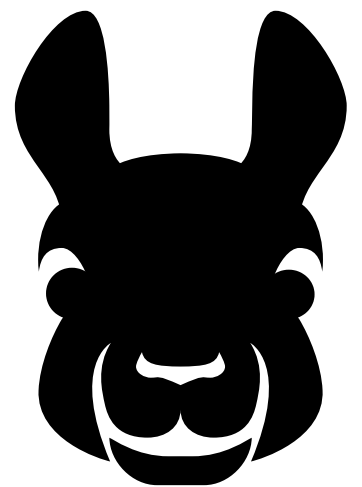
How good are you at reading mirror writing?  
Check yourself.

As a knowledgeable traveler and photographer, I set out on another journey. It's time for us to explore South America to see the wonders of that region. After all, the diversity of the old Inca and Aztec civilizations is waiting for me. It is in this country that I intend to visit these beautiful places and see the wonders of the world. Time will be my guide. So we're going to Peru. After a few days of hiking, passing the self-labeled Inca and Aztec ruins, we learn Machu Picchu. Did you know that if you go to the wonderful world of the world?

Start here. 



Indicate on the map where  
this place is located,  
if its coordinates are: 13°S, 72°W.



Lama zone



Our next destination is the Atacama Desert, located in Chile. This time we got there by car, visiting the Los Flamencos nature reserve. This place turned out to be incredibly beautiful. This desert is approx. 450 km long and up to 100 km wide. There are only a few oases there. Did you know that this is the driest desert on the globe? It is located in the northern part of Chile and belongs to the misty deserts.



What do these drawings have to do with the Atacama Desert?



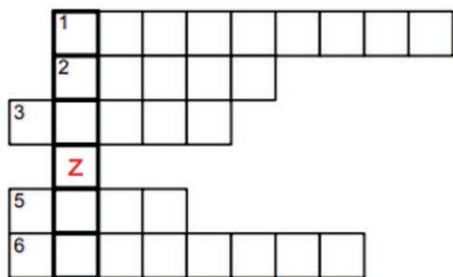


For the next week, we drove to the town of Foz to Iguacu. The Iguazu Falls were waiting for us there. It was impossible to ignore this amazing natural wonder and not included on your must-see list in South America. It is considered one of the 7th new wonders of nature. No wonder, it is one of the most beautiful places in the world. It is 2.7 kilometers wide and its maximum height is 82 meters. We bought the option to go next to these waterfalls on a tourist motorboat. It was worth it!



The Iguazú Falls-  
the new wonder of  
the world

Find the hidden word in the bold rectangles by filling the answers of the clues in the puzzle.



Solve the puzzle and you will receive information about which country, apart from Argentina and Paraguay, there is a waterfall.

The hidden word is: .....

The clues:

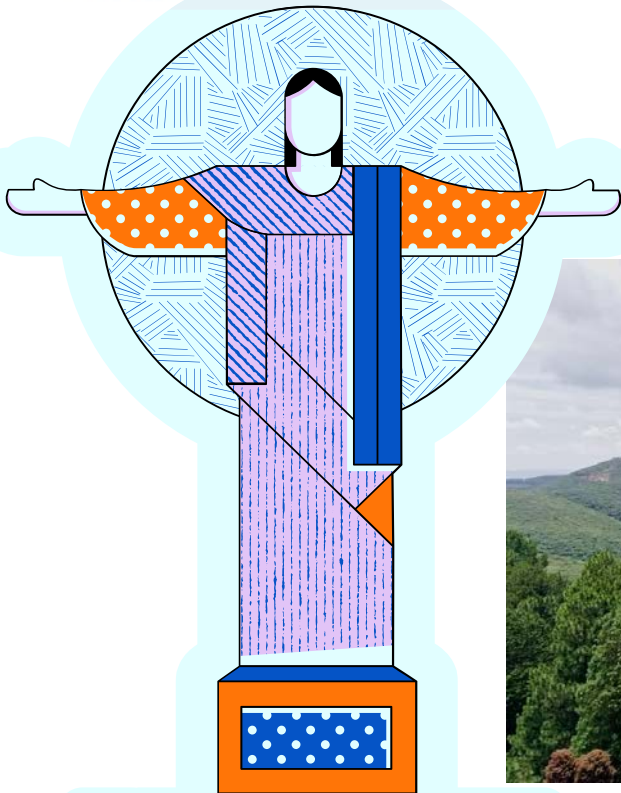
1. The Iguazu falls are among the most \_\_\_\_\_ places in the world.
2. The waterfall is located on the Iguazu \_\_\_\_\_.
3. The waterfall was created by \_\_\_\_\_ eruptions.
5. The Iguazu falls are on the UNESCO \_\_\_\_\_.
6. You can climb the \_\_\_\_\_ to watch the waterfall up close



## Reading zone

The next point of our trip was Rio de Janeiro - the second largest city in Brazil. We got there from Iguazu by plane in just 2 and a half hours. From the plane's windows we saw the most spectacular symbol of this city - the Statue of Christ the Redeemer. It is the highest statue of Christ in the world, its total height is 38 meters. Did you know that about 1.9 million people from all over the world visit it every year? And we wanted to see this place up close. My friend Diego told me that the figure can withstand wind speeds of up to 250 km per hour, which means that even a strong hurricane is not able to ruin it. I was impressed with how many years this structure has survived. One of the curiosities of this place is that the crown of Christ is also a lightning rod, due to the fact that over the years the statue has lost its eyebrow, lip and finger from lightning strikes. An interesting fact is that the entire monument weighs approximately 1145 tons and that it is also one of the new seven wonders of the world.

**An interesting fact is that the entire monument weighs approximately 1145 tons and that it is also one of the new seven wonders of the world.**



# BRAZIL

**Calculate the relative height of the statue knowing that it is 38 meters high and is situated on a mountain 710 meters above sea level.**

Due to my departure back to my country, we had to end this wonderful journey. From it I learned a lot about the natural environment of South America, the beauty of which I have immortalized in hundreds of photos that I took during this trip. As a summary of your adventure, solve a crossword puzzle about places you have visited and points of interest.

Sources: [https://en.wikipedia.org/wiki/Machu\\_Picchu](https://en.wikipedia.org/wiki/Machu_Picchu)  
[https://pl.wikivoyage.org/wiki/Machu\\_Picchu](https://pl.wikivoyage.org/wiki/Machu_Picchu)  
[https://en.wikipedia.org/wiki/Atacama\\_Desert](https://en.wikipedia.org/wiki/Atacama_Desert)  
<https://www.britannica.com/place/Atacama-Desert>  
<https://www.britannica.com/place/Iguacu-Falls>  
<https://iguazufalls.com/national-park/>  
[https://en.wikipedia.org/wiki/Christ\\_the\\_Redeemer\\_\(statue\)](https://en.wikipedia.org/wiki/Christ_the_Redeemer_(statue))


Made by:  
Milena Kulikowska



Author: Lena Kruk

# Where I am?

You go on an underwater journey around Australia. You start the expedition in Australia's capital city: 1. 





You go out to sea east of the town where the famous opera house is located: 2. 




You go to the north. As you pass the city of Brisbane you see a beautiful view from behind the window and find out that it is: 3. 

It is a place located along the northeastern coast of Australia, in the Coral Sea.

You go towards the island, whose name you will learn after solving the word puzzle.



You sail past a place that is the northernmost point of Australia. You pass the Gulf of Carpentaria, which cuts almost 670 km deep into the northern part of the continent. You decide to stop in the area of 4.  which lies 240 km east of the city, whose geographical coordinates are  $12^{\circ} 25' S, 130^{\circ} 48' E$ : 5.  You sail past a water reservoir that is about 300 km wide at its entrance: 6.  You decide to sail southwest. This will take you across the world's third largest ocean: 7. 

You head south. You pass by the Cape, which is the south-westernmost part of the country: 8.  After a few hours of sailing, you see a small island belonging to the Recherche Archipelago: 9.  where the pink lake, Hillier, is located. Its area is: 10.  hectares.

Calculate the surface area of Lake Hillier. Assume that its length is about 250 m and its width about 600 m.

Then, you sail into the Bay, which has an area of  $45,926 \text{ km}^2$ : 11. 

You end your trip on Australia's first largest island - 12. 







This place has suffered because of climate warming. Scientists estimate that it could disappear from the Earth by 2050.



Do you know where you are? Mark this place on the map and the entire route with each point of the journey.

Made by:  
Lena Kruk

Sources: <https://www.australia.com/en>  
<https://www.britannica.com/place/Australia>  
<https://www.busemprzezswiat.pl/2014/04/fakty-ciekawostki-o-australii/>  
<https://www.geografia24.eu/>



Which Australian animals do you recognize?

1



2



3



4



5



13

6



7



8



9



12



10



11





Author: Natalia Stachyra

# Australia

First town, that we're going to visit is Adelaide. It is known for the fact that there are a lot of churches. I think we should try their special food that is called „pie floater”, meat pasty with thick pea soup, because it's on the list of „State treasures of southern Australia”.

**Exercise 1:** Pick one picture, that you think is pie floater.

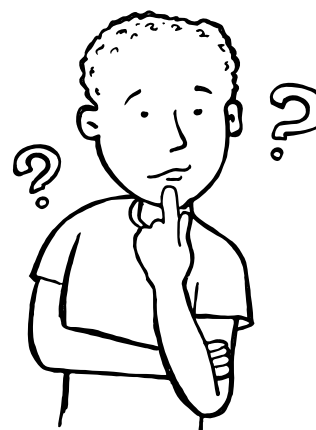


Second place is:

**Exercise 2:** Solve the rebus:



--r, --ies, +a



It's the capital city of Australia.

It is Australia's largest city in the inland and the 8<sup>th</sup> largest city in the country. .... has 457 563 inhabitants.

There are 469 people/km<sup>2</sup>.

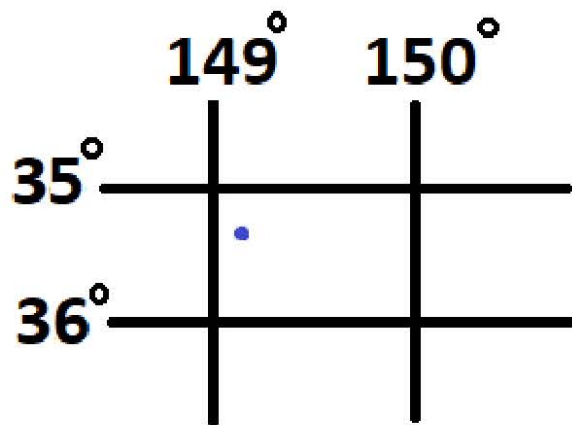
It is situated at a height of 550-700 m (above sea level).

Area is 814 km<sup>2</sup>.



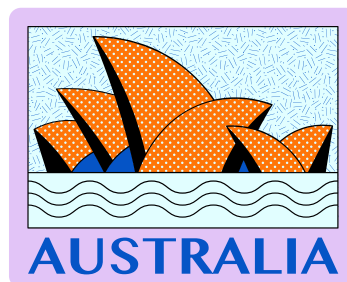


**Exercise 3:** Check the geographical coordinates:



Next town is going to be Sydney! I think that you know, what is it known for.

**Exercise 4:** Sign this building:



Besides that, interesting fact is that, between Sydney and Perth there is Indian Pacific → a railway line that traverses the entire country through the Blue Mountains towards the Flinders Ranges Mountain. It has the longest straight section of the railway track in the world.

Forth place is Brisbane. Temperature there is often over 30°C. In Brisbane there are 283 sunny days in each year! It is a city in Australia located on the Pacific Ocean. It is the third largest city in Australia. The population of 2.5 million inhabitants. With Gold Coast, Sunshine



Coast and Toowoomba, it forms the metropolitan region and the South East Queensland agglomeration. It is an important scientific (universities) and cultural (museums, art galleries) centre. Many cultural, political and sports events of an international nature took place here, for example the Games of the Commonwealth of Nations. City is in subtropical climate zone.

---

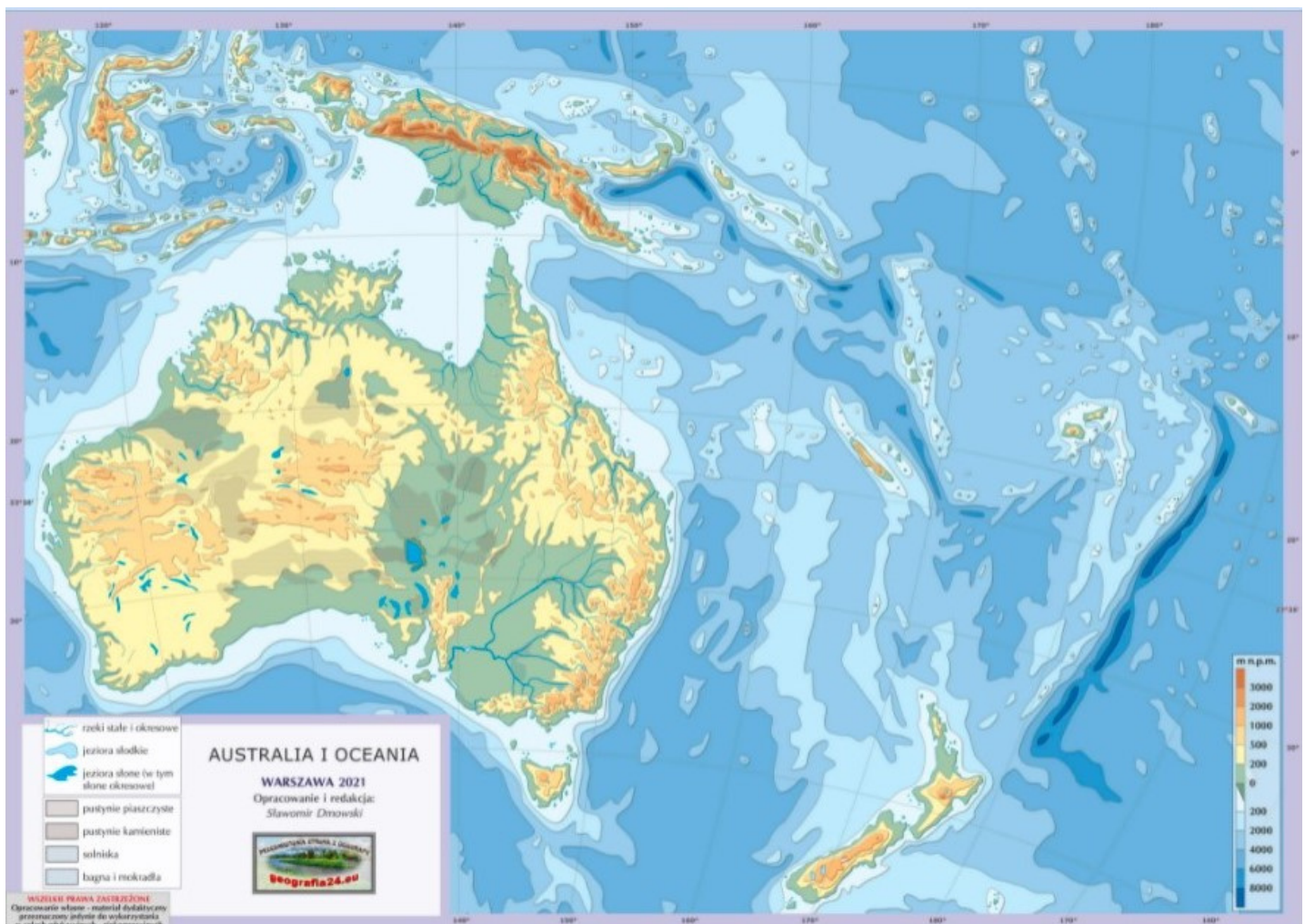
### Exercise 5:

There is a Mount Townsend that is on 2209m (above sea level) and Mount Twynam on 2196m (above sea level). Calculate the relative height from the top of the lower mountain to the top of the higher one.

---

### Exercise 6:

Based on this text, mark the track we have travelled on a map!





*It's time for some exercises!*

**Exercise 7:** Complete the table with cities/ example buildings:

<i>Australia's city:</i>	<i>Famous building:</i>
	<i>Opera House</i>
<i>Melbourne</i>	
	<i>Rialto Towers</i>
<i>Perth</i>	
	<i>Prima Pearl Tower</i>
<i>Brisbane</i>	

**Exercise 8:** Cross out incorrect geographic names based on this next:

*Adelaide/Melbourne* is famous because of its big amount of churches.

*Mount Townsend/Mount Kosciuszko* is the highest mountain in Australia.

*Sydney/Canberra* is the capital city of Australia.

*Melbourne/Sydney* is the biggest town in Australia.

**Exercise 9:** Sign these plants:



---

*Made  
by Natalia Stachyra*

*Źródła:* <http://www.travelmaniacy.pl>  
[Brisbane – Wikipedia, wolna encyklopedia](https://www.wikipedia.pl/wiki/Brisbane)  
<https://www.bing.com/travelguide?q=Canberra&12sid=59ab58e3-2f00-9175-e7b8-76d910040855&form=PLAC>  
<https://www.bing.com/search?q=sydney>  
<https://fajnepodroze.pl/australia-ciekawostki-informacje>



# Zespół redakcyjny:

Lena Kruk

Milena Kulikowska

Aya Mamandi

Krzysztof Maszewski

Szymon Podolak

Natalia Stachyra

opiekun projektu: Anna Skoczeń

opieka językowa: Hubert Wiktorowicz

Mapy konturowe, które wykorzystaliśmy w gazetce  
dzięki uprzejmości ich autora

Pana Sławomira Dmowskiego, znajdziecie na stronie:

<https://www.geografia24.eu/>

W tworzeniu gazetki pomagała nam Canva i jej zasoby.

---





**Zespół Szkolno-Przedszkolny nr 1  
Szkoła Podstawowa nr 7  
Al. Armii Krajowej 3  
21-040 Świdnik**

**Poland**

---